



30 ANGUS DRIVE, MONIFIETH, DD5 3BN
OFFERS OVER £250,000



HOME REPORT VALUATION	£250,000
EPC RATING	B



This beautifully presented three-bed semi-detached villa, constructed by Barratt Homes in 2019, is set within a popular modern development in Monifieth — a highly sought-after coastal town known for its excellent local schooling, convenient transport links and close proximity to Dundee. The area offers a fantastic balance of suburban living with easy access to shops, parks and the waterfront, making it particularly appealing to families and professionals alike.

The property enjoys a neat frontage with off-street parking, providing practicality for modern living, while maintaining an attractive kerb appeal in keeping with the surrounding development.

Internally, the home opens into a welcoming hallway finished with contemporary laminate flooring extending through the ground floor, a generous under-stair cupboard offering excellent storage and a further cupboard housing the fuse box. The lounge is positioned to the front and provides a stylish yet comfortable living space, enhanced by a bespoke black wood media wall and quality blinds.

To the rear, the property features an impressive open-plan kitchen and dining space, designed very much with modern living in mind. The kitchen is fitted with sleek grey gloss wall and base units, complemented by a breakfast bar, and includes a gas hob, oven and integrated fridge freezer. The dining area also incorporates a wood panel media wall and benefits from a patio door opening directly onto the rear garden, allowing for a bright and sociable environment ideal for both everyday living and entertaining. A particularly useful utility cupboard is accessed from this area, providing space for white goods such as a washing machine and tumble dryer, while also housing the boiler.

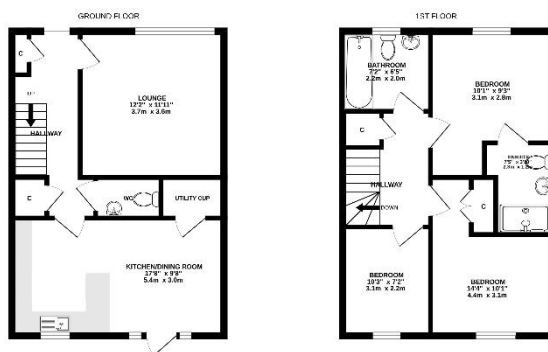
The ground floor is completed by a WC featuring wood panelling and decorative floating shelving.

Upstairs, the hallway is carpeted and includes an attic hatch along with a useful linen cupboard for additional storage. The principal bedroom is positioned to the front and features carpet flooring and built-in wardrobes with mirrored sliding doors. This room also benefits from its own en-suite shower room, fitted with linoleum flooring, a shower enclosure and a medicine cabinet.

Bedroom two is a good-sized double room overlooking the rear garden and is enhanced by fitted wardrobes and drawer units that integrate seamlessly into the space. Bedroom three, also rear-facing, offers flexibility for use as a bedroom, nursery or home office.

The modern family bathroom is fitted with wood-effect linoleum flooring and includes a bath with overhead shower, tiled surround and a medicine cabinet, completing the accommodation.

Externally, the rear garden has been thoughtfully landscaped to create a highly usable outdoor space, with a patio area leading to a raised lawn, as well as a decking section with pergola—ideal for relaxing or entertaining. A large shed provides excellent additional storage.



THESE ARE APPROXIMATE DIMENSIONS ONLY. FOR MORE INFORMATION PLEASE CONTACT THE ESTATE AGENT. DIMENSIONS ARE GIVEN TO THE CENTRE OF WALLS UNLESS OTHERWISE STATED. DIMENSIONS OF ROOMS ARE GIVEN TO THE CENTRE OF WALLS UNLESS OTHERWISE STATED. DIMENSIONS OF ROOMS ARE GIVEN TO THE CENTRE OF WALLS UNLESS OTHERWISE STATED. DIMENSIONS OF ROOMS ARE GIVEN TO THE CENTRE OF WALLS UNLESS OTHERWISE STATED.



